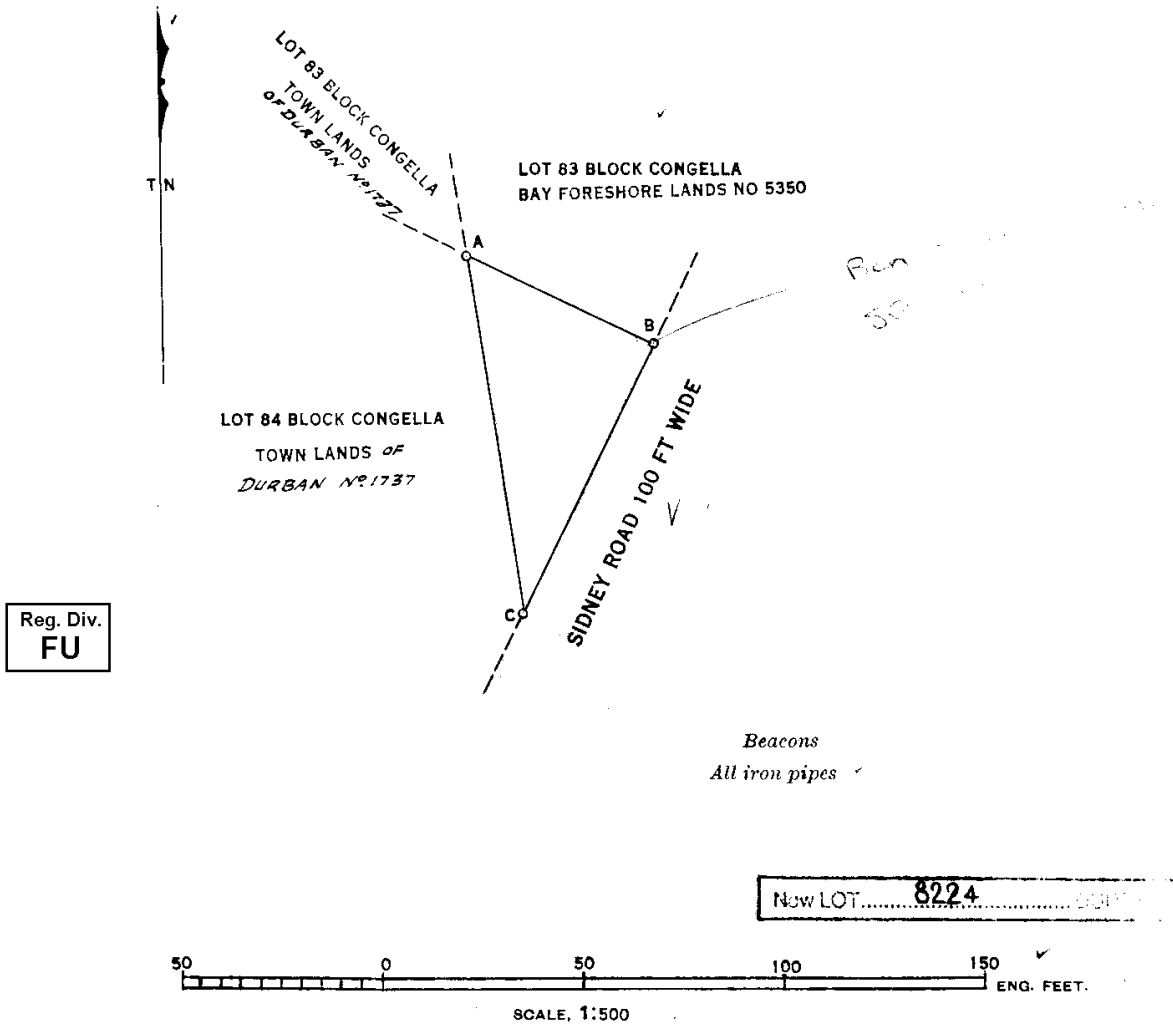


SIDES ENGLISH FEET		ANGLES OF DIRECTION		CO-ORDINATES SYSTEM L.O. 31° ADD 10,000,000 TO ALL X'S.	
				Y	X
AB	50.70	A	55° 48' 40"		
BC	74.64	B	90.00.00.		
CA	90.23	C	34.11.20.		

S.G.N° 1177/44

Approved

P. P. Fischer
Surveyor General.
13 JUN 1944



The figure A.B.C.

represents

1892 Square Feet of Land being

LOT 90 BLOCK CONGELLA OF BAY FORESHORE LANDS No 5350

situate in the City of Durban, Province of Natal.

Surveyed in NOVEMBER 1929 by me

A. Brown
Land Surveyor.

This diagram relates to D.T. No. 7268/1944. 13-10-44 <i>(Sgd) T. Rautenbach</i> Registrar of Deeds.	Original diagram is G.V. 61. No. 104 Vol. 2. relating to Deed of Grant No. 5350 Plan. 44x1.	File No. 276/8 Survey Records 649 Tracing Degree Sheet 53 Compilation FT-88-25-8 General Plan
---	---	--

FOR ENDORSEMENTS, etc.; SEE BACK

SG 1177/1944

B. 1177	1944
B.	477/64.

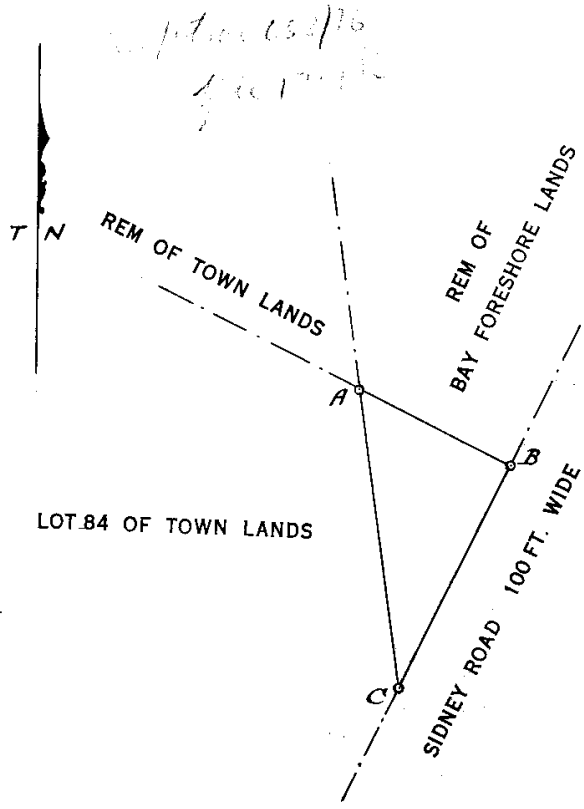
CANCELLED

L. Sub. Vol. 7 Fol. 52

Approved

S. G. J. ...
Surveyor General.

13/1/30



Reg. Div.
FU

LEASEHOLD

SIDES		ANGLES	
AB	50.70	A	55° 48' 40"
BC	74.64	B	90. 0. 0
CA	90.23	C	34. 11. 20

S. G. J. ...
1/11/30

Lease 1 on LOT 8224 DURBAN



The figure A. B. C. Represents — Acres 1892 Square Feet
of land called 90
— LOT 84 BLOCK CONGELLA OF BAY FORESHORE LANDS NO. 5350 —

situate in the Town Lands of Durban, Province of Natal.

Surveyed in Nov, 1929 by me

S. G. J. ... Land Surveyor.

This diagram is annexed to deed of Lease
No 37/1931.
Dated Reg'd. 30th. March 1931.

(Sgd) M. P. Melville
Registrar Deeds

Original diagram is annexed to
Deed of No.
Dated G
Sub. Vol. 104 Fol. 2.